



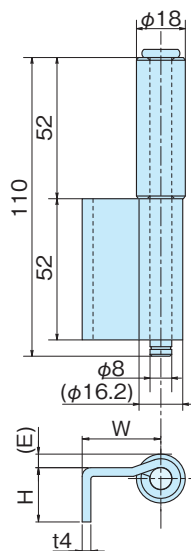
防水型蝶番 (2管)

WATERPROOF HINGES

A-30~40-2(ss)・SA-30~40-2(sus)



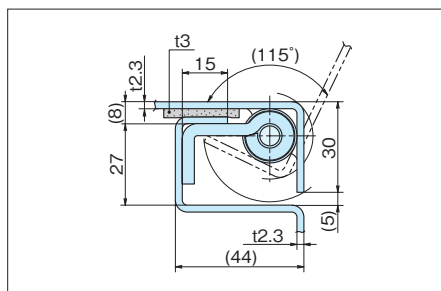
A-30



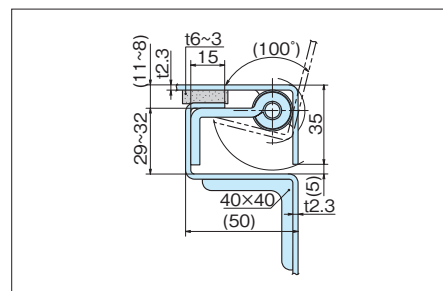
- 特 徴**
- ピンが抜き差しでき、取付けが簡単です。
 - SA-30~40はステンレス製で耐食性に優れています。
- Feature**
- It's slip-joint type and simple to install on the panel.
 - SA-30~40 is stainless steel product, so it has a high resistance to corrosion.

- 材 質**
- A-30~40/鉄 (SPHC) 4t
 - SA-30~40/ステンレス (SUS304) 4t
- 表面処理**
- A-30~40/ピンのみ三価クロメートめっき
- 用 途**
- 配電盤・分電盤・制御盤・その他各種防水型BOX
- Material**
- A-30~40/Hot rolled steel plate (SPHC)4t
 - SA-30~40/Stainless steel plate (SUS 304)4t
- Finish**
- A-30~40/Zinc chromate plating (Pin only)
- Specific Use**
- Distribution, control boards, all kinds of waterproof panels.

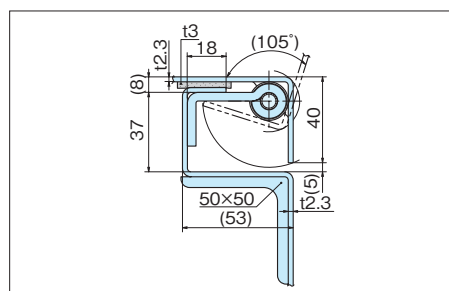
■参考取付例
Example of installing reference



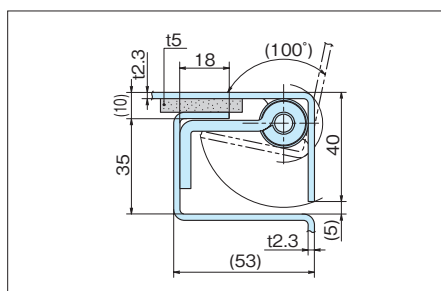
(A-30-SA-30)



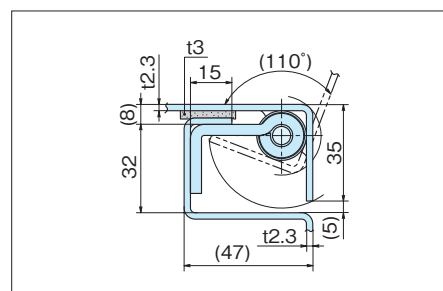
(A-32-SA32)



(A-34-SA-34)



(A-36-SA-38)



(A-40-2-SA-40-2)

品 番 Product No.		W	H	(E)	自 重(g) Weight		入 数 Lot	単 価 Price	
SS	SUS				SS	SUS		SS	SUS
A-30	SA-30	29	20	5	245	238	30	¥320	¥1,150
A-30-6	SA-30-6			7	245	238		¥320	¥1,150
A-32	SA-32			8	266	259		¥320	¥1,150
A-34	SA-34	38	25	5	266	262	20	¥320	¥1,150
A-36	SA-38			8	266	262		¥320	¥1,150
A-40-2	SA-40-2	33		5	260	254		¥320	¥1,150
A-40-2-6				6	260			¥320	