

分岐回路接続銅帯

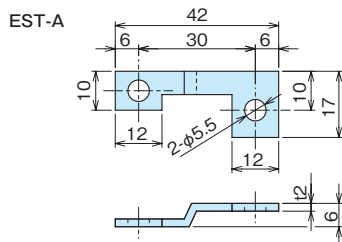
CONNECTING BARS FOR BRANCH CIRCUIT



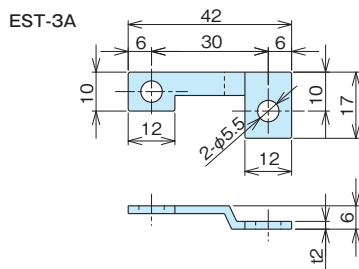
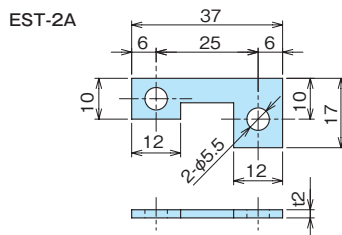
EST-A~B



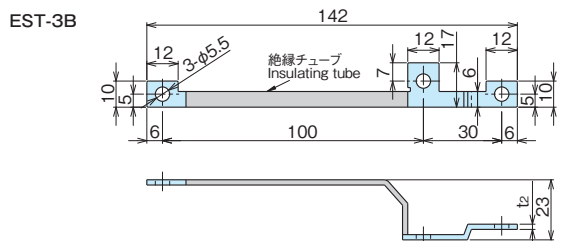
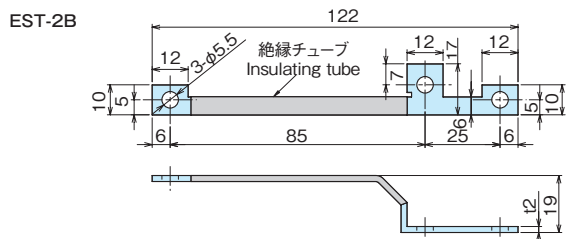
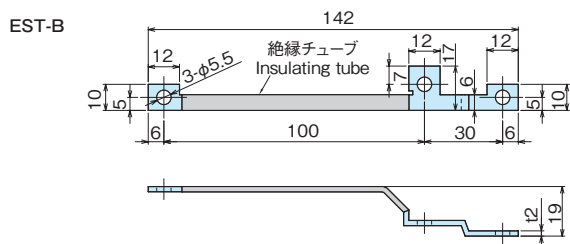
EST-A



EST-2A



EST-2B



材質 ●銅板(Cu)・2t
表面処理 ●ニッケルめっき
備考 ●穴は共通φ5.5

Material ●Copper (Cu)・2t
Finish ●Nickel plating
Remarks ●Common size holes:5.5

品番 Product No.	自重(g) Weight	入数 Lot	単価 Price
EST-A	7	100	¥160
EST-2A	6.4	100	¥150
EST-3A	7	100	¥160
EST-B	19.4	100	¥410
EST-2B	17.4	100	¥380
EST-3B	20	100	¥440

主幹バー
分岐バー

分岐銅帯接続例(参考図)

